

PCB Piezotronics Inc. claims proprietary rights in the information disclosed hereon. Neither it nor any reproduction thereof will be disclosed to others without written consent of PCB Piezotronics Inc.

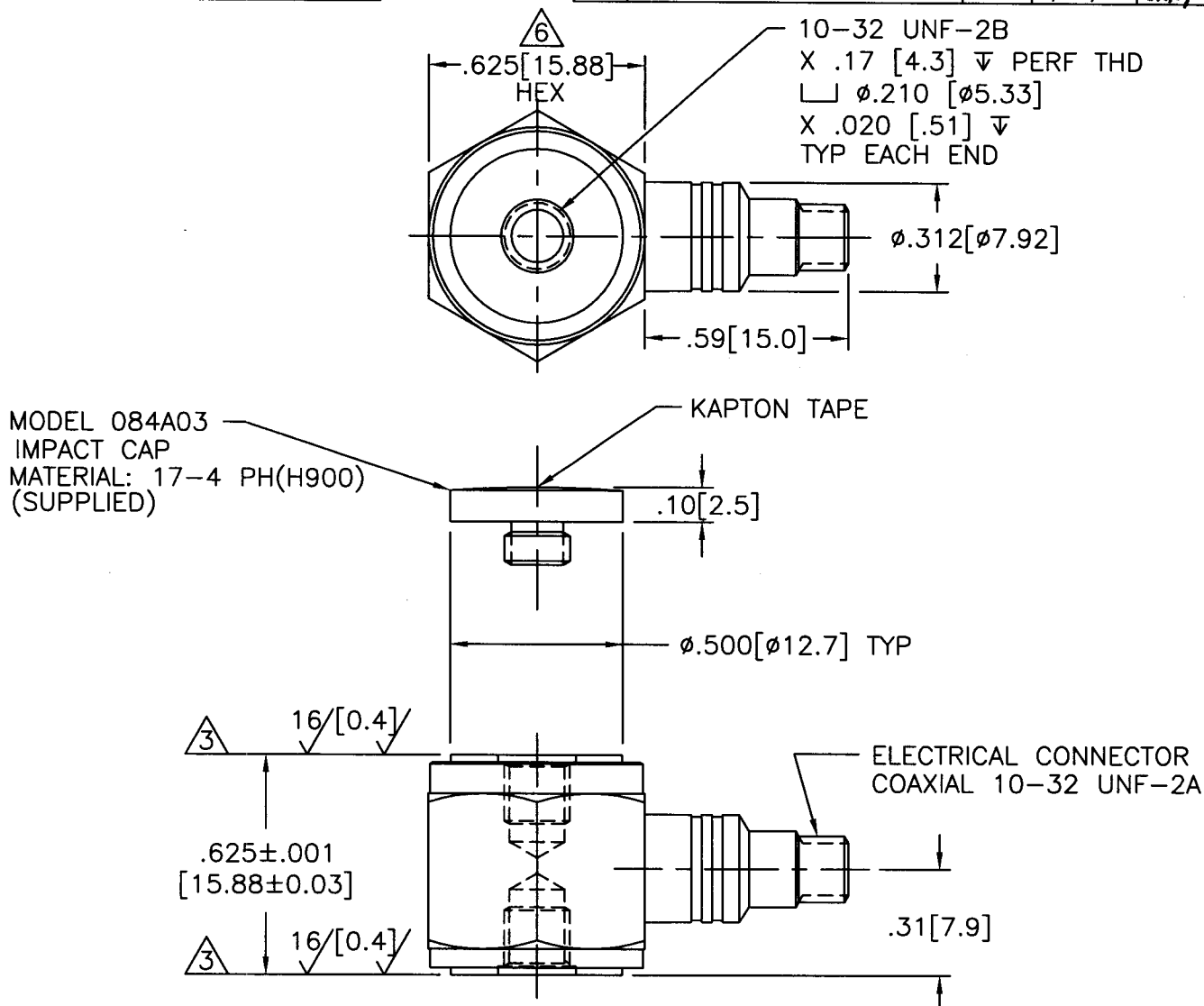
8561

APPLICATION

NEXT ASS'Y	USED ON	VAR

REVISIONS

REV	DESCRIPTION	ECN	DATE	APP'D
D	REVISED PER ECN	19846	5/13/04	DM5/04



- △ MOUNTING TORQUE ON .625[15.88] HEX, 16-20 INCH POUNDS [181-226 NEWTON CENTIMETERS].
- 5.) COMPRESSIVE FORCE ON CELL YIELDS POSITIVE OUTPUT VOLTAGE.
- △ DRILL PERPENDICULAR TO MOUNTING SURFACE TO WITHIN $\pm 1^\circ$.
- △ THESE SURFACES GROUND FLAT AND PARALLEL TO WITHIN .001[0.03] TIR.
- △ MOUNTING SURFACE TO BE FLAT TO WITHIN .001[0.03] TIR WITH A MIN 125/[3.2/].
- 1.) CASE MATERIAL-STAINLESS STEEL.

UNLESS SPECIFIED TOLERANCES

DIMENSIONS IN INCHES	DIMENSIONS IN MILLIMETERS [IN BRACKETS]
DECIMALS XX \pm .01	DECIMALS X \pm 0.3
XXX \pm .005	XX \pm 0.13
ANGLES ± 2 DEGREES	ANGLES ± 2 DEGREES

FILLETS AND RADII .003 - .005	FILLETS AND RADII [0.07 - 0.13]
----------------------------------	------------------------------------

DRAWN	MDP	5/13/04	MFG	KLG	5/14/04
CHK'D	DM	5/14/04	ENGR	DMB	5/14/04
APP'D	MDK	5/14/04	SALES	JJW	5/14/04

TITLE
INSTALLATION DRAWING
MODEL 208C01 - 208C05
GENERAL PURPOSE ICP® FORCE SENSOR

PCB PIEZOTRONICS
3425 WALDEN AVE. DEPEW, NY 14043
(716) 684-0001 EMAIL: SALES@PCB.COM

CODE IDENT. NO. 52681

DWG. NO. 8561

SCALE: 2 X SHEET 1 OF 2

PCB Piezotronics Inc. claims proprietary rights in the information disclosed herein. Neither it nor any reproduction thereof will be disclosed to others without written consent of PCB Piezotronics Inc.

8561

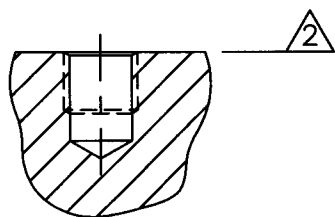
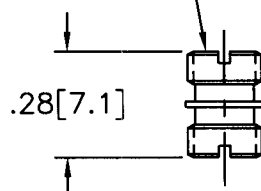
APPLICATION

NEXT ASS'Y	USED ON	VAR

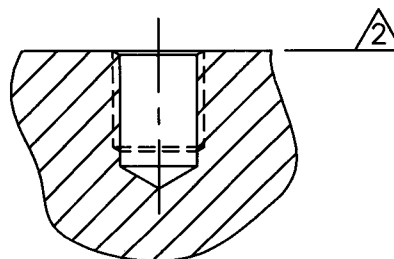
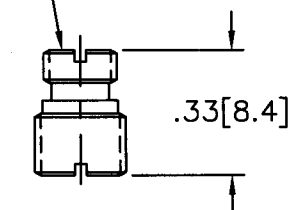
REVISIONS

REV	DESCRIPTION	ECN	DATE	APP'D
	-SEE SHEET ONE-			

MODEL 081B05
MOUNTING STUD
10-32 UNF-2A
TYPICAL BOTH ENDS
(2 SUPPLIED)



MODEL M081A62
MOUNTING STUD
10-32 UNF-2A BY
M6 X 1.00-6g
(2 SUPPLIED)



STANDARD MOUNTING HOLE PREPERATION

DRILL ϕ .159 [ϕ 4.04] \triangle
X .23 [5.8] ∇ MIN.
TAP 10-32 UNF-2B
X .15 [3.8] ∇ MIN.

METRIC MOUNTING HOLE PREPERATION:

DRILL ϕ .199 [ϕ 5.05] \triangle
X .30 [7.6] ∇ MIN.
TAP M6 X 1.00-6H
X .25 [6.4] ∇ MIN.

UNLESS SPECIFIED TOLERANCES

DIMENSIONS IN INCHES	DIMENSIONS IN MILLIMETERS [IN BRACKETS]
DECIMALS XX \pm .01	DECIMALS X \pm 0.3
XXX \pm .005	XX \pm 0.13
ANGLES \pm 2 DEGREES	ANGLES \pm 2 DEGREES
FILLETS AND RADII .003 - .005	FILLETS AND RADII [0.07 - 0.13]

DRAWN	WDF	5/13/04	MFG	KLG	5/14/04
CHK'D	DM	5/14/04	ENGR	DMB	5/14/04
APP'D	MJL	5/14/04	SALES	gjm	5/14/04

TITLE
INSTALLATION DRAWING
MODEL 208C01 - 208C05
GENERAL PURPOSE ICP® FORCE SENSOR

PCB PIEZOTRONICS™
3425 WALDEN AVE. DEPEW, NY 14043
(716) 684-0001 EMAIL: SALES@PCB.COM

CODE IDENT. NO. 52681	DWG. NO. 8561
-----------------------------	-------------------------

DD011 REV. C 01/21/03

SCALE: 2 X SHEET 2 OF 2