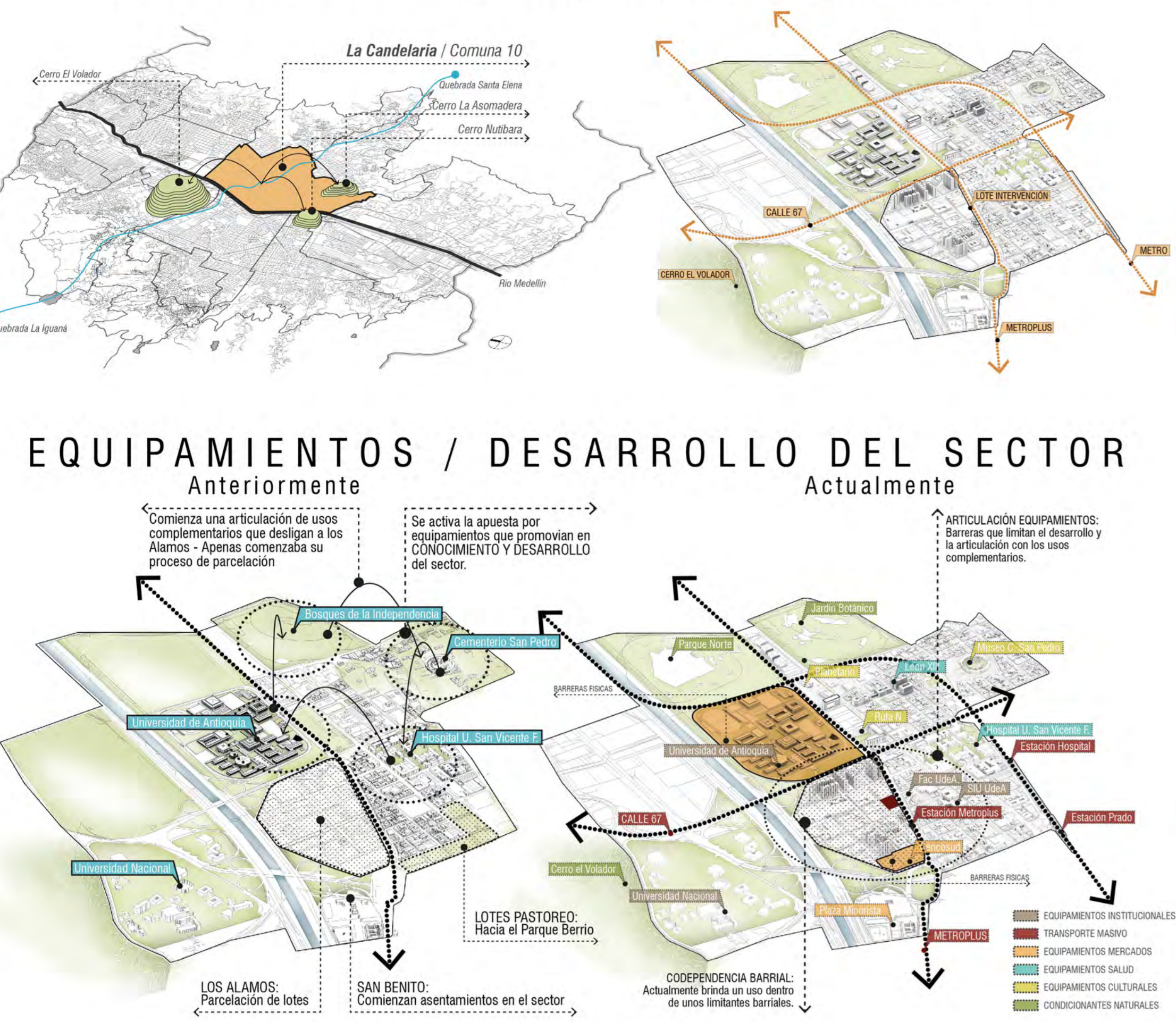
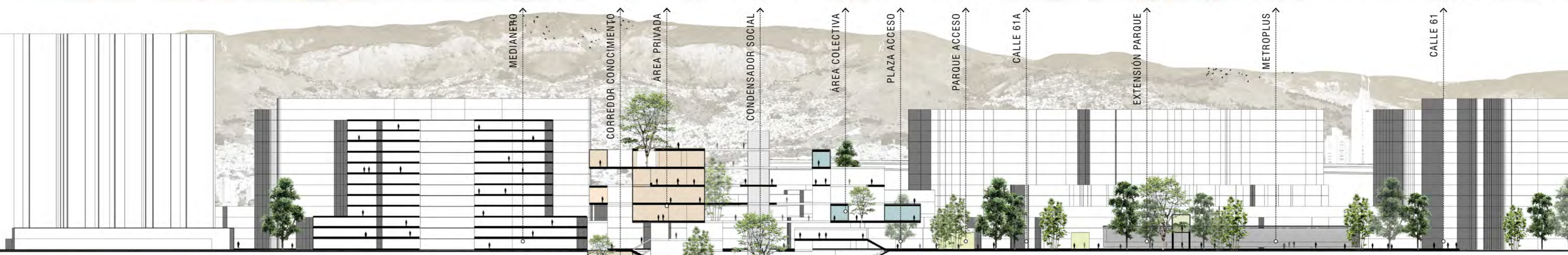
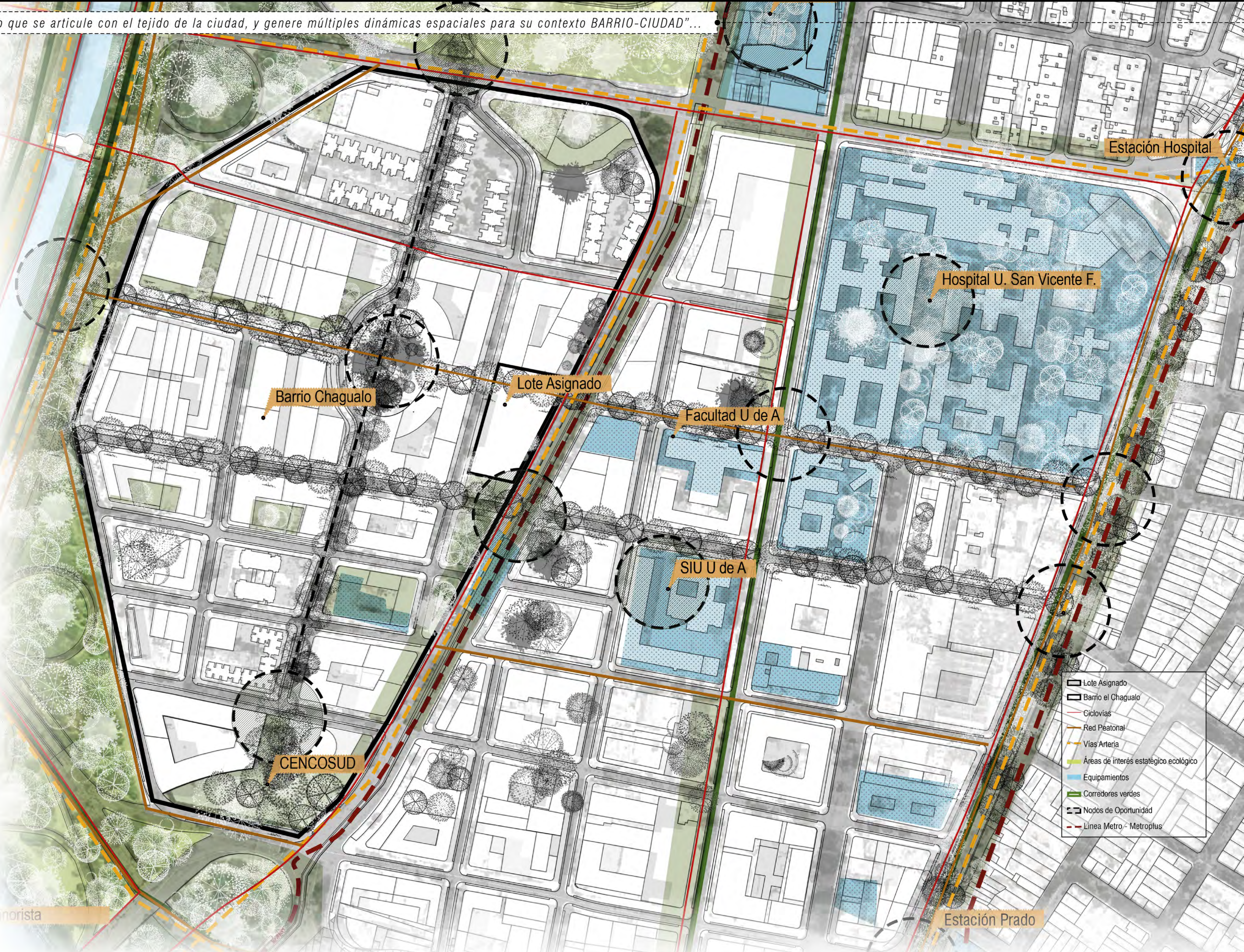
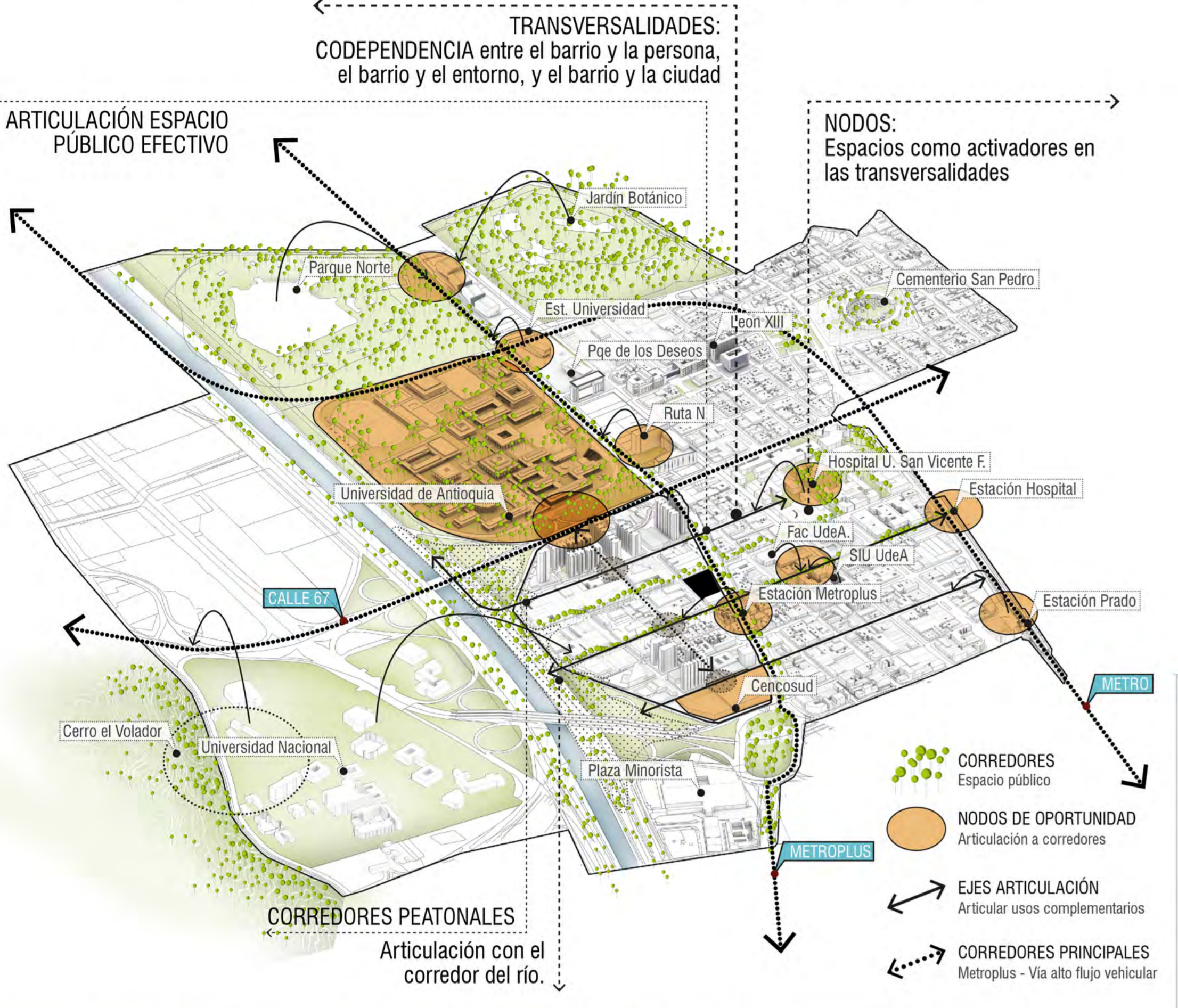


"Un edificio que se articule con el tejido de la ciudad, y genere múltiples dinámicas espaciales para su contexto BARRIO-CIUDAD..."

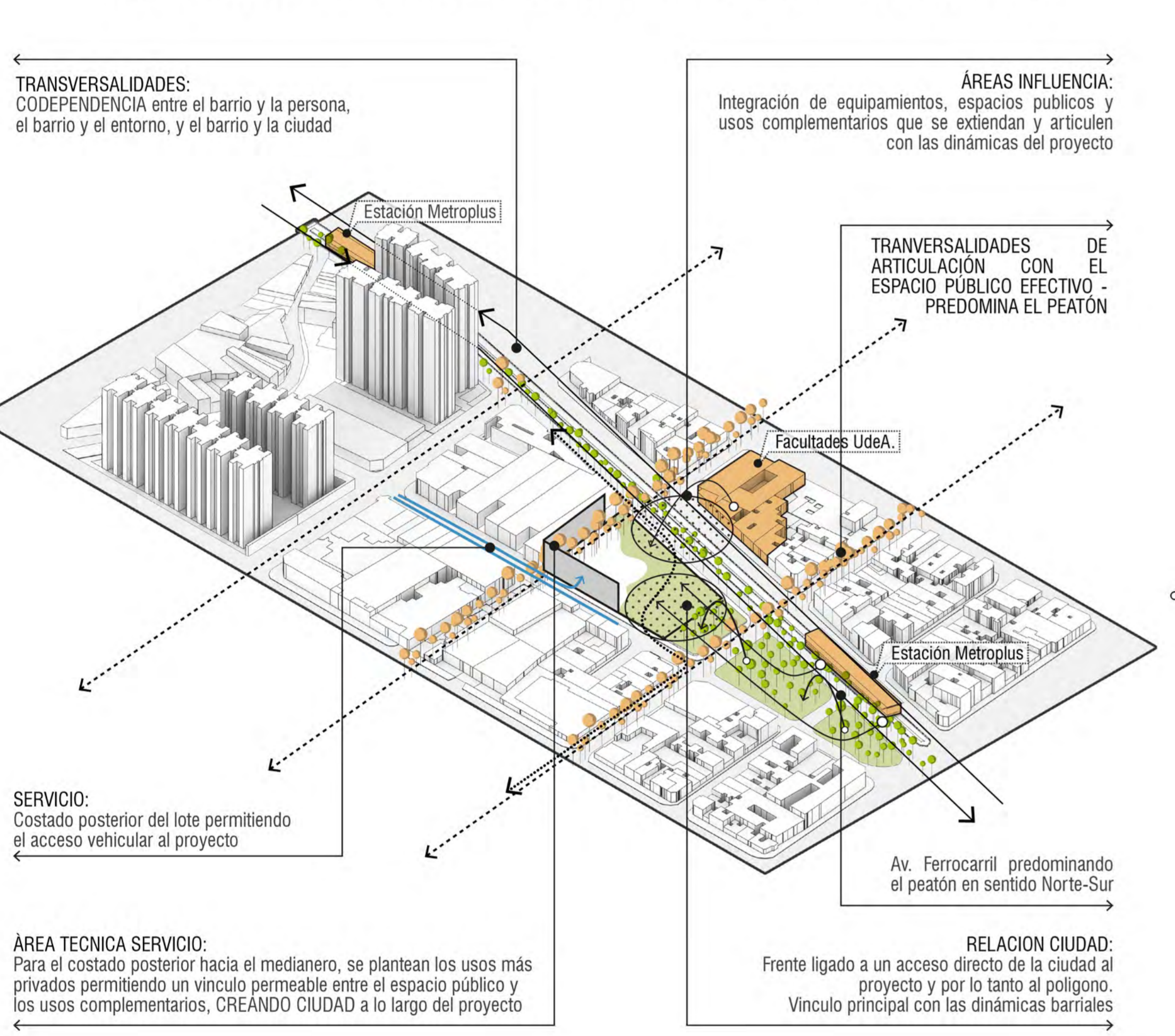
DISTRITO DE INNOVACIÓN - MEDELLÍN



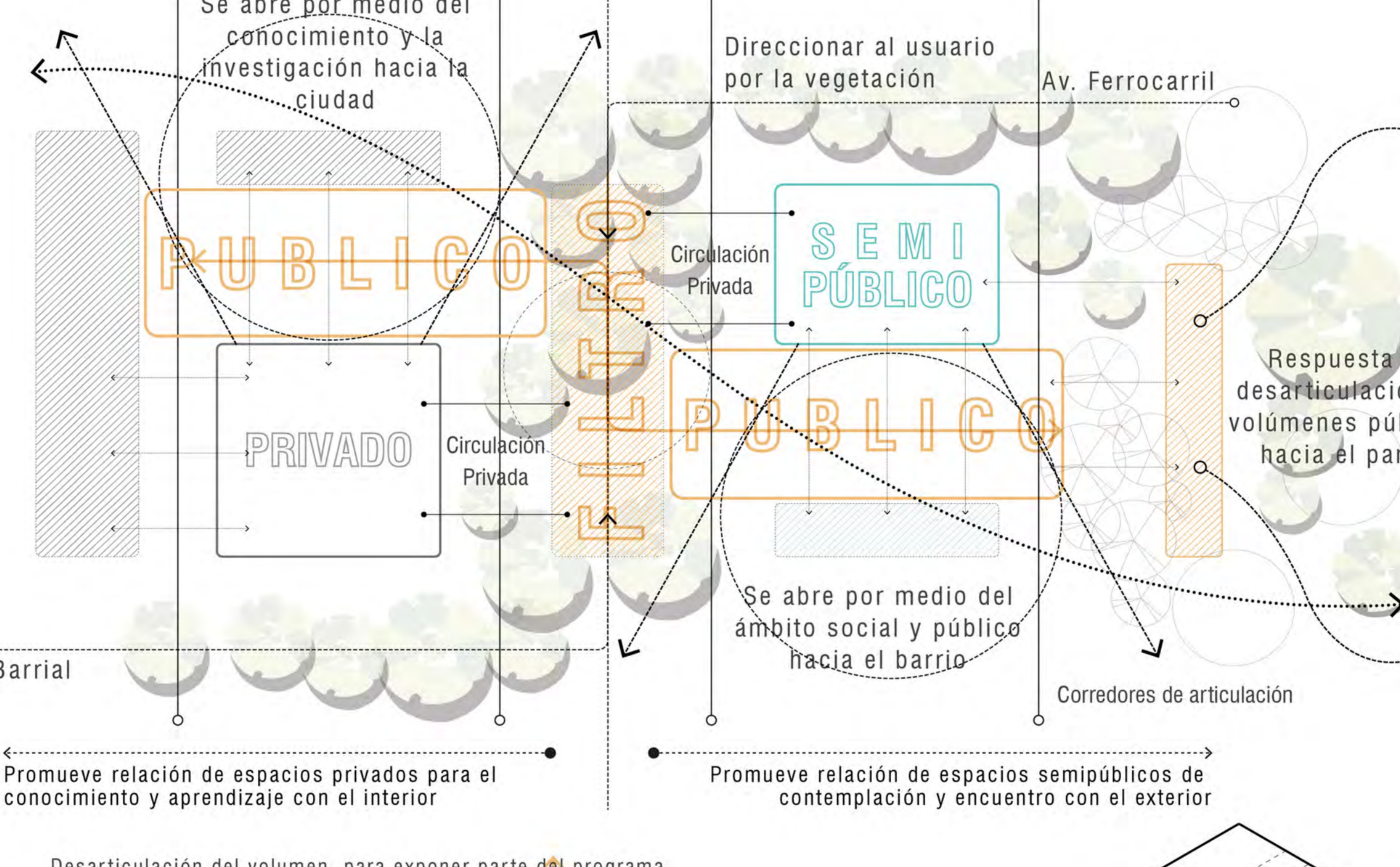
ESTRATEGIAS PARA EL SECTOR



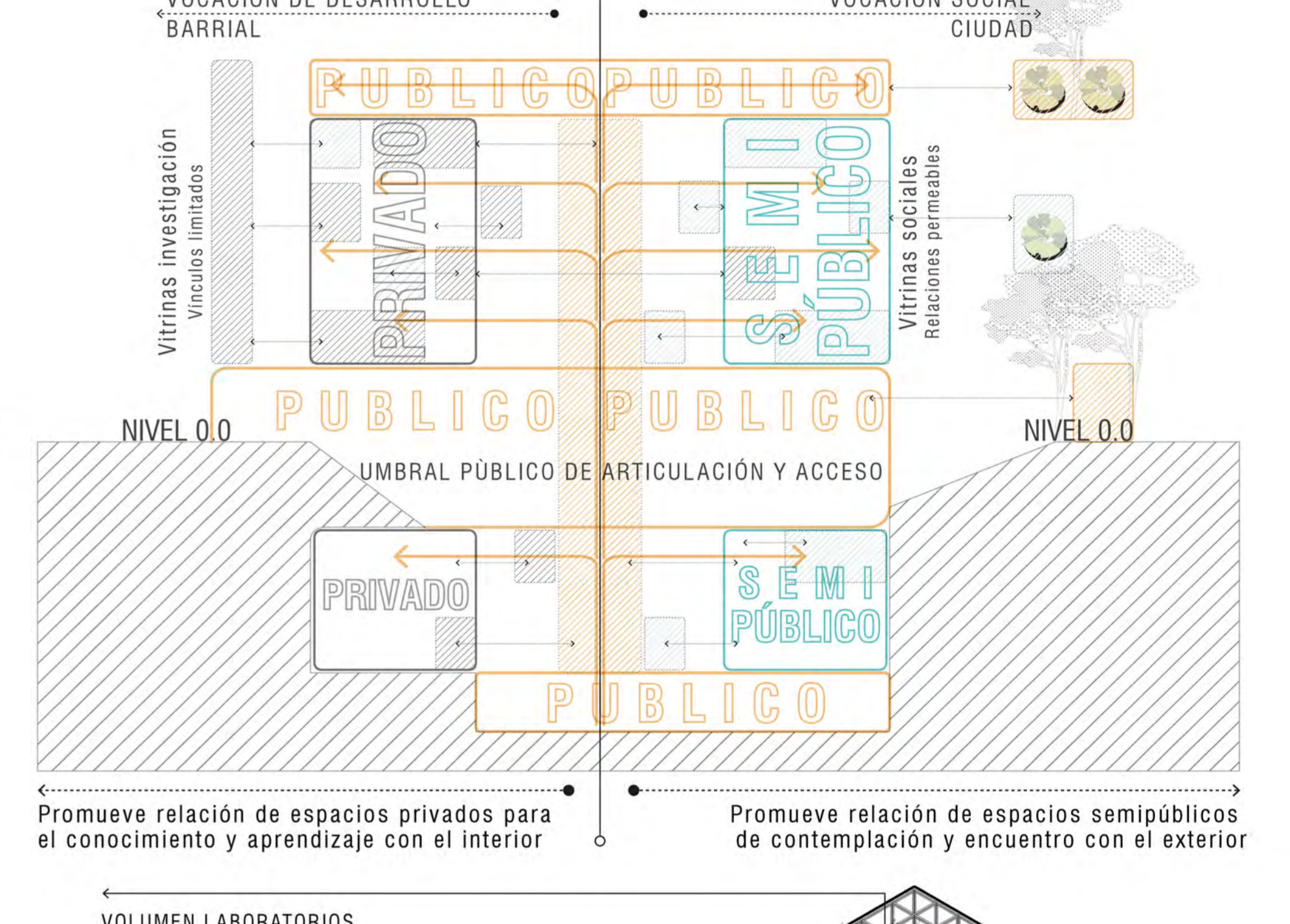
OPORTUNIDADES / SITUACIÓN ACTUAL



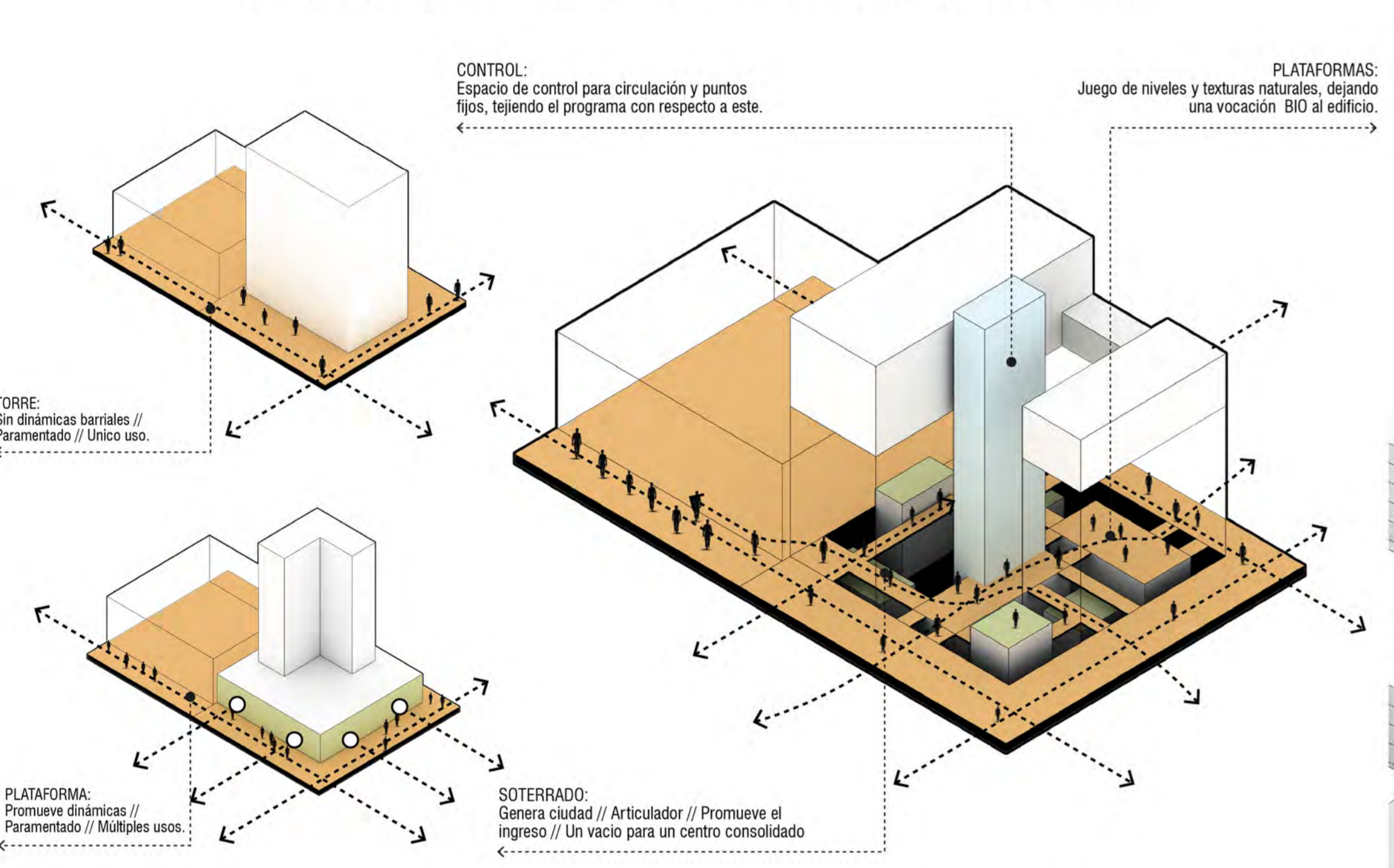
DESCOMPOSICIÓN DEL VOLUMEN



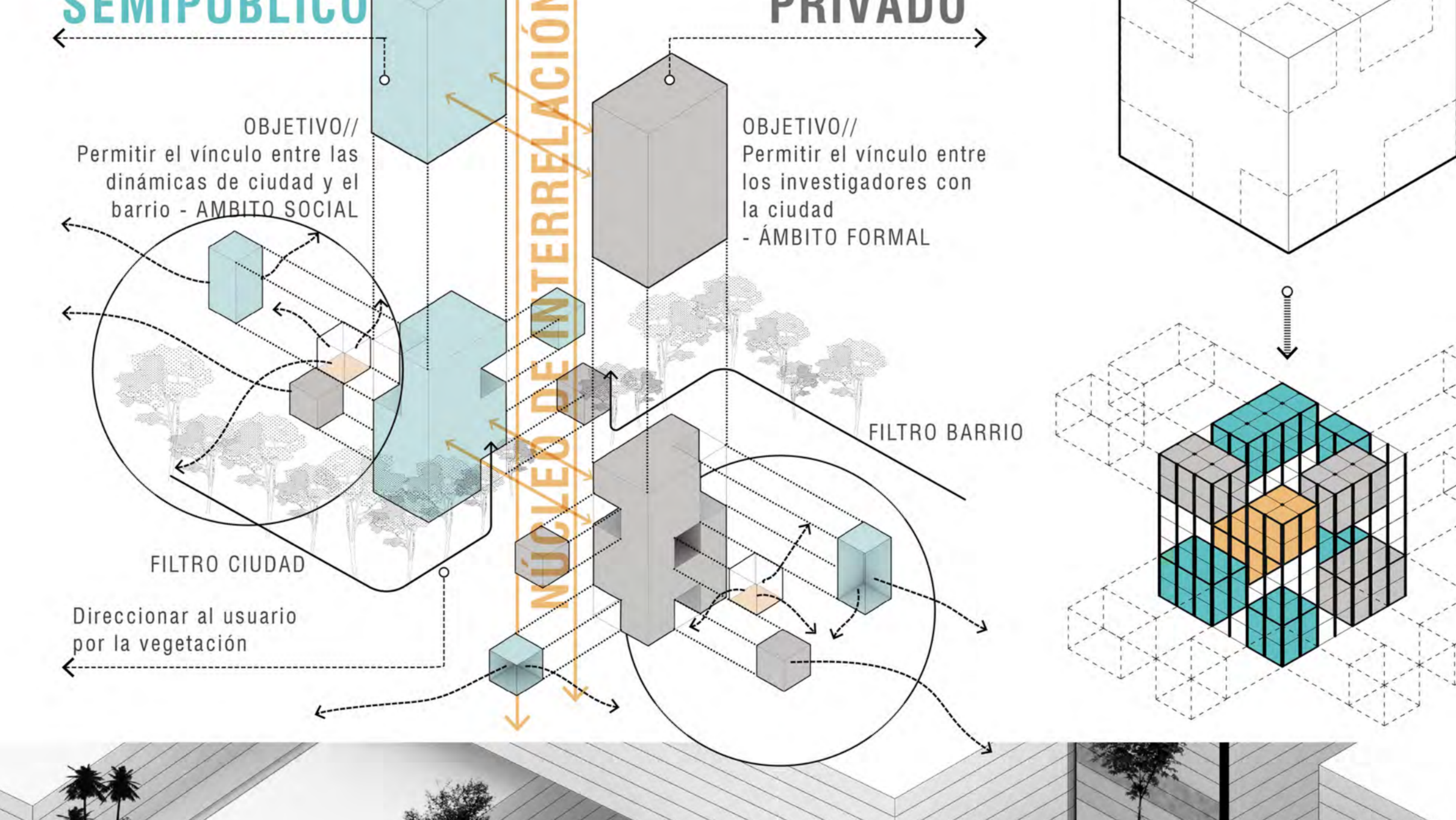
VOCACIÓN DE DESARROLLO BARRIAL / VOCACIÓN SOCIAL CIUDAD



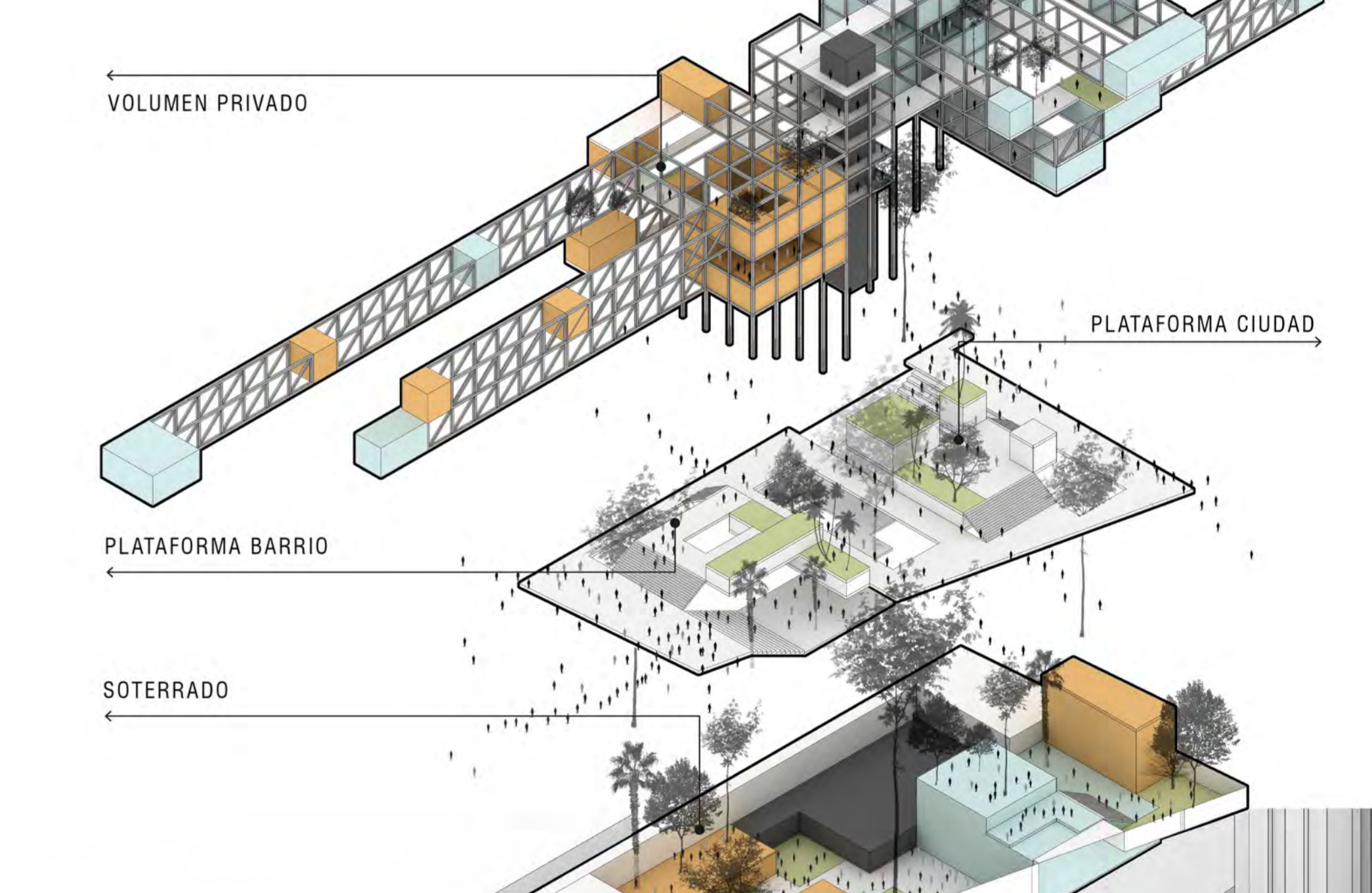
ESTRATEGIA DE IMPLANTACIÓN



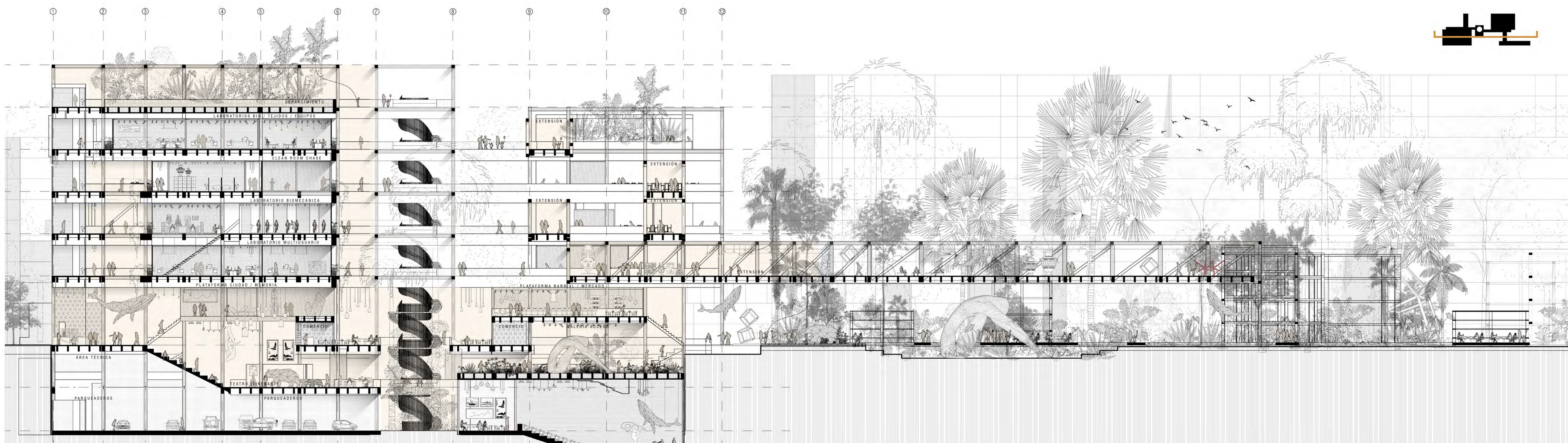
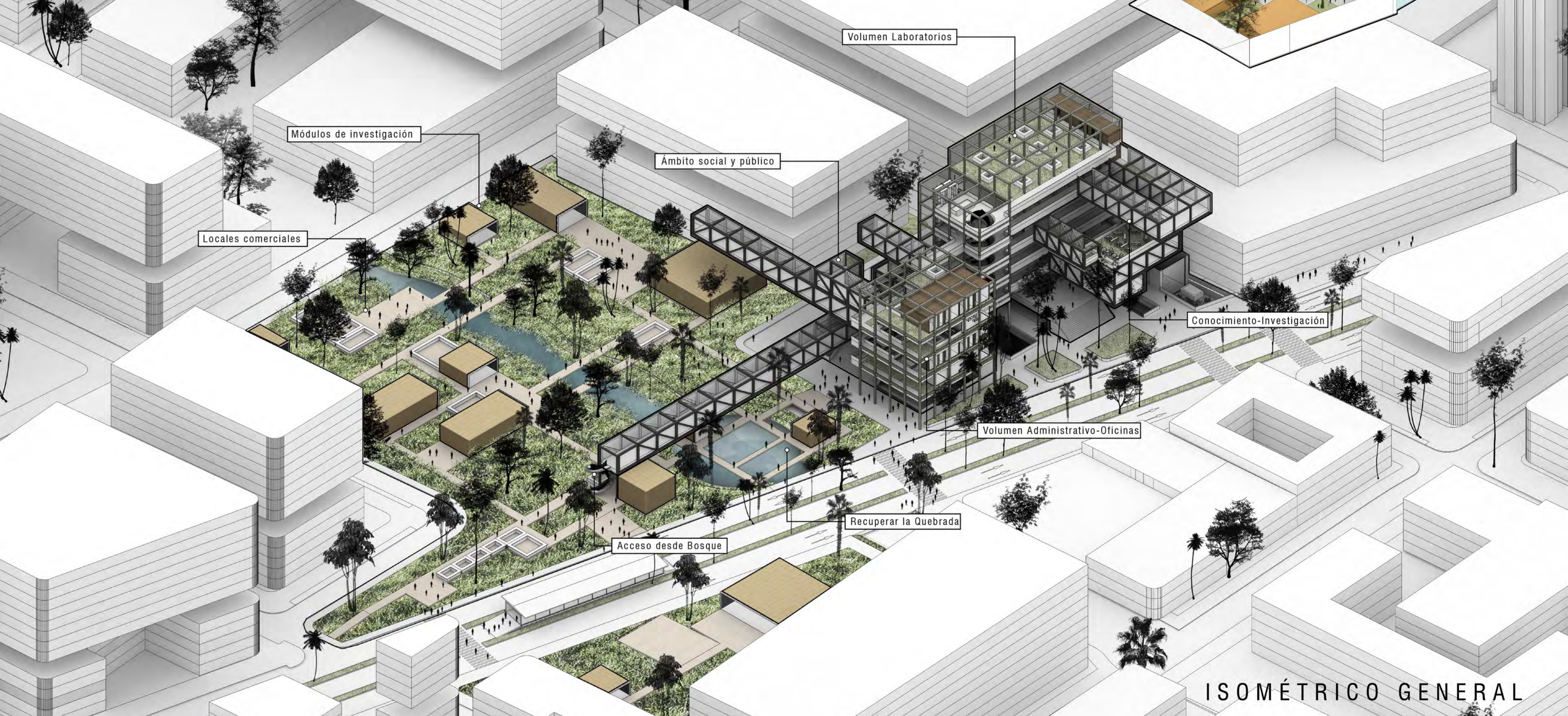
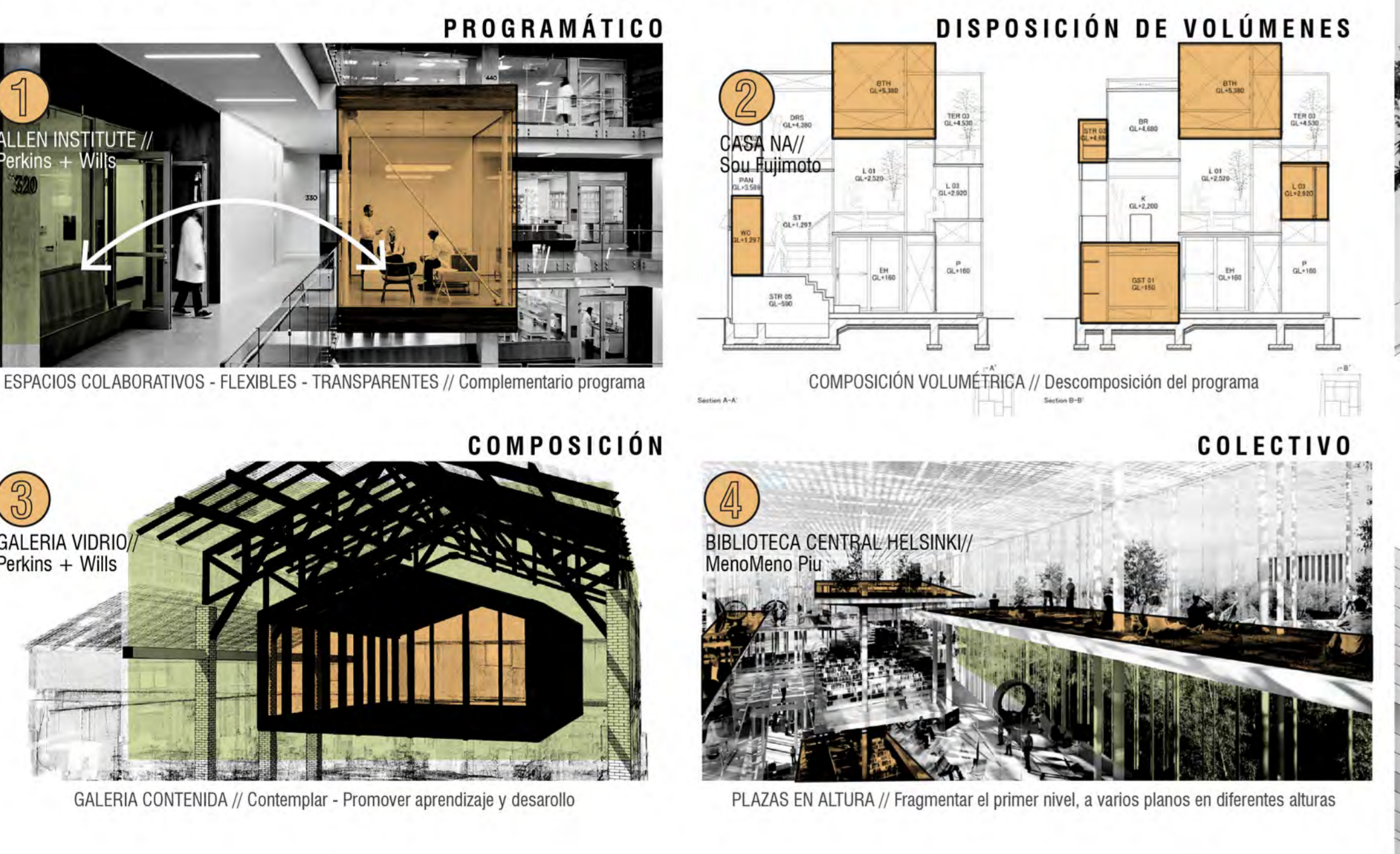
Desarticulación del volumen, para exponer parte del programa

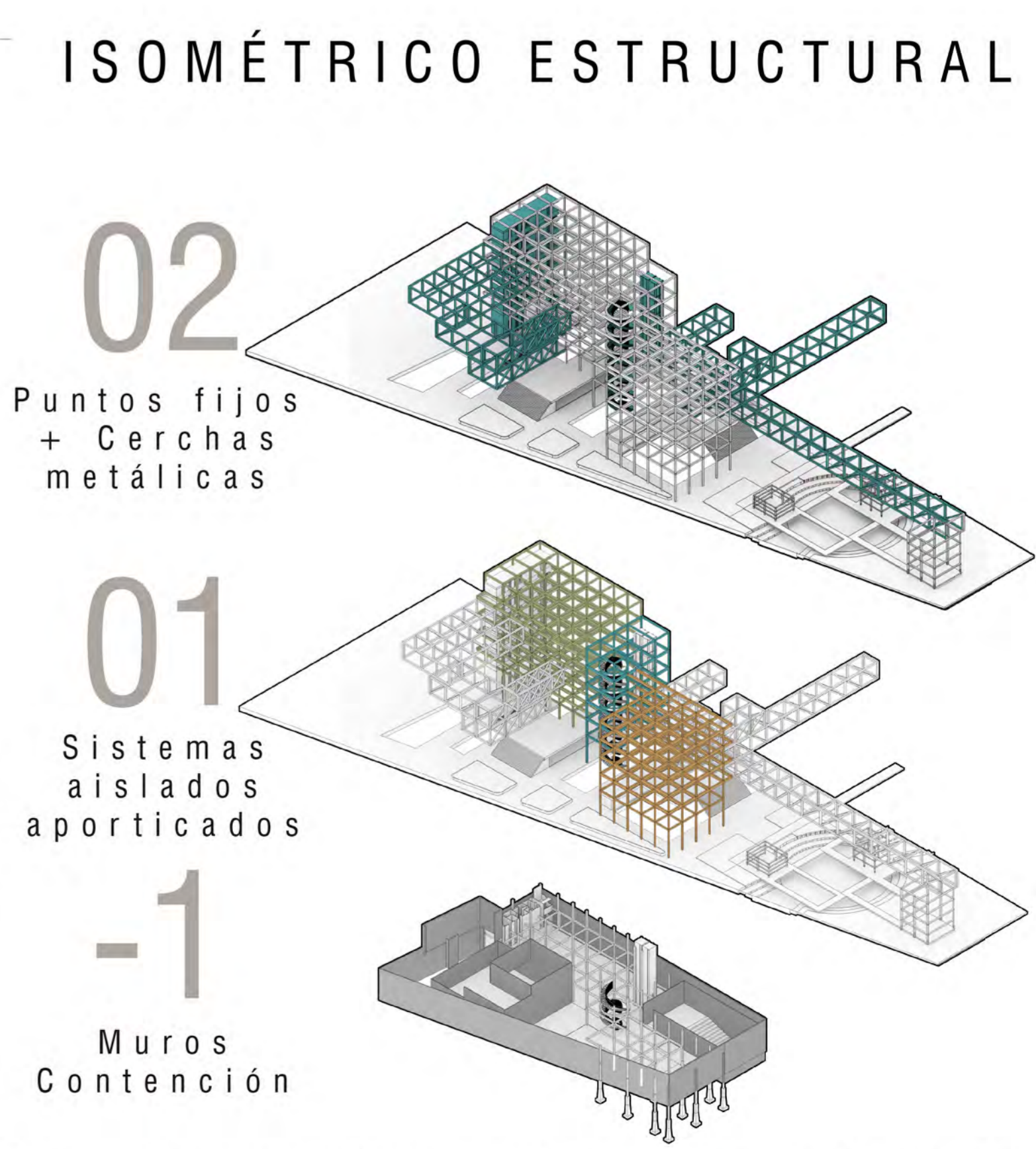
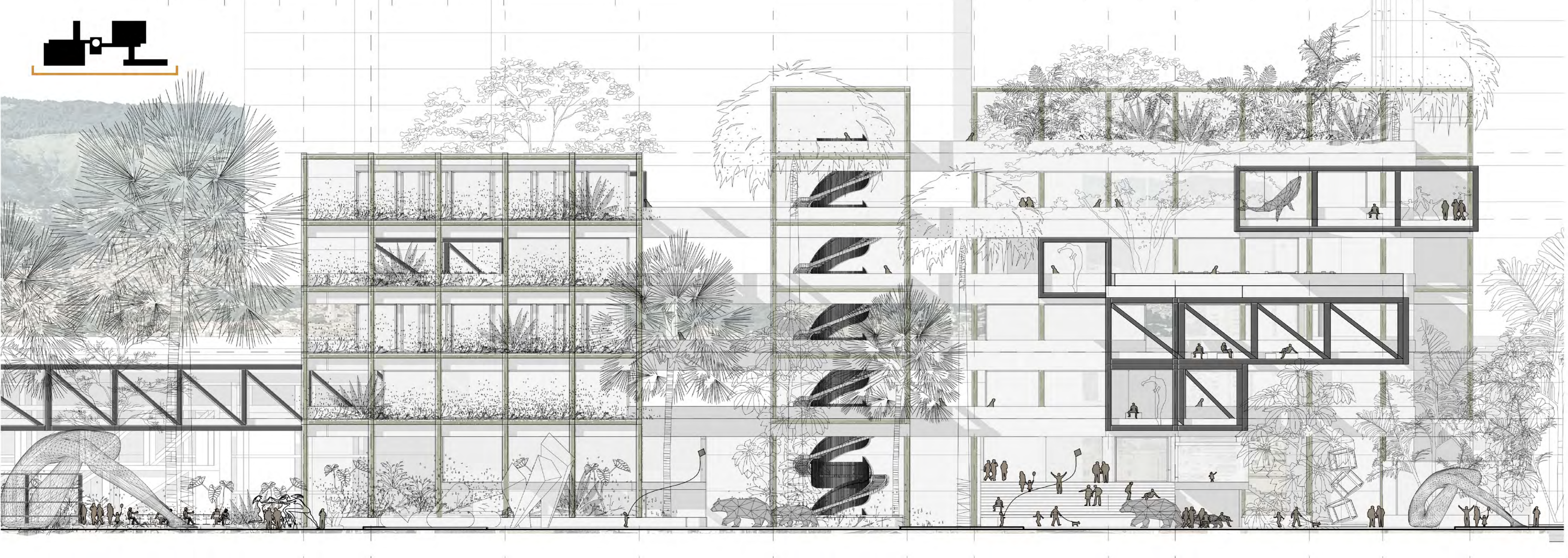
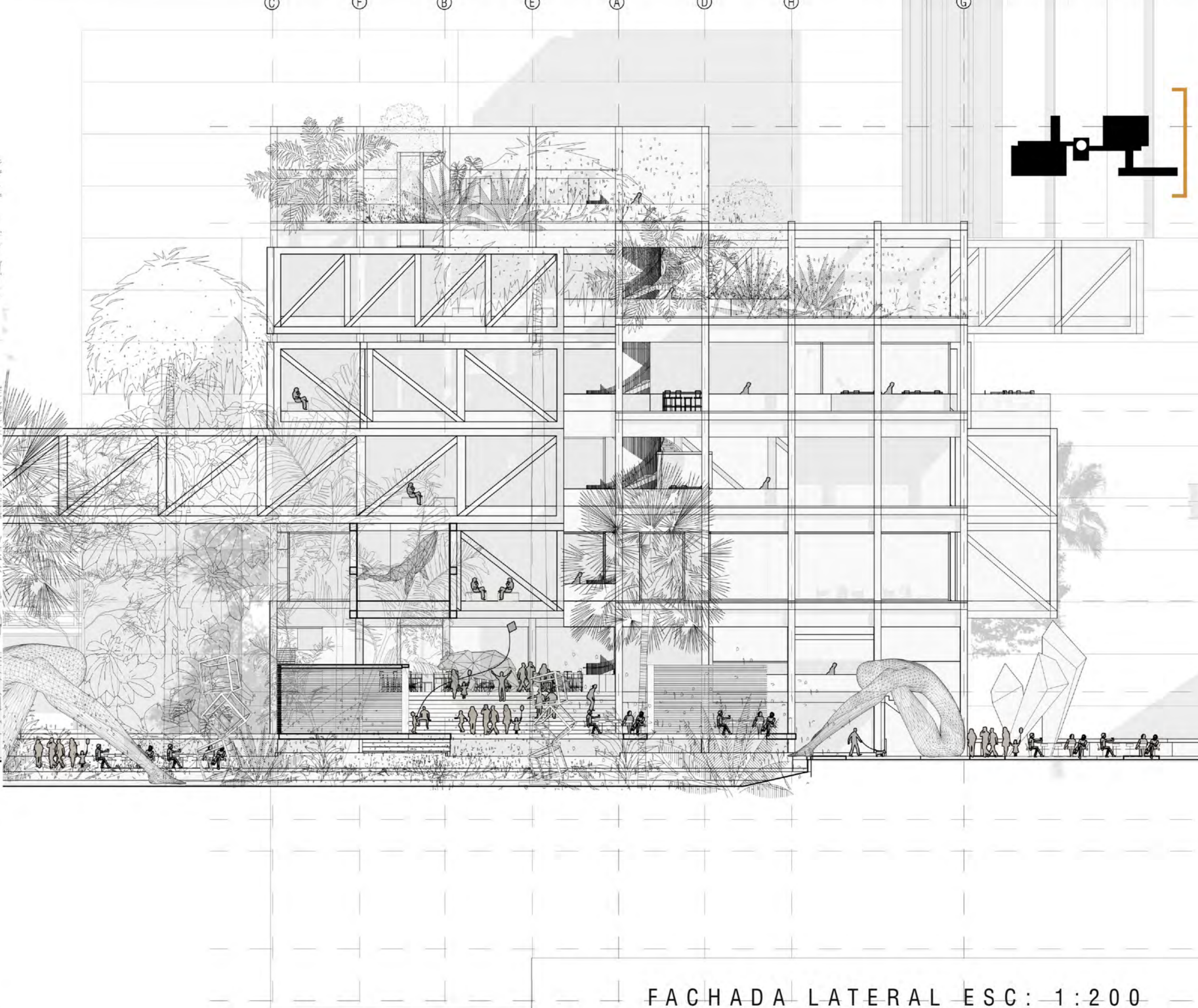
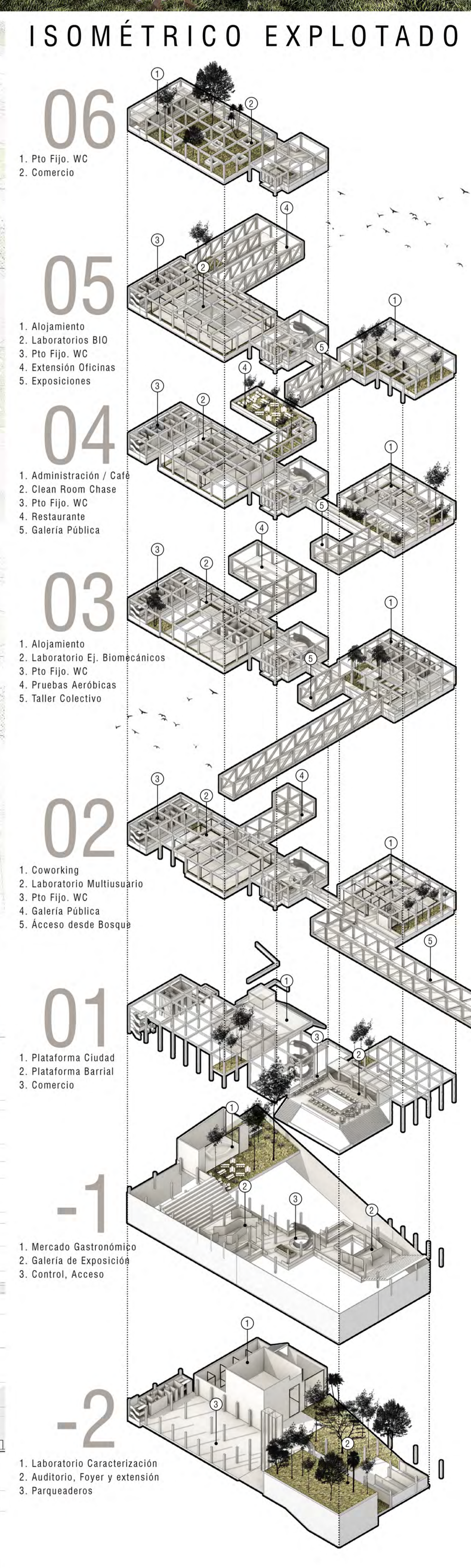
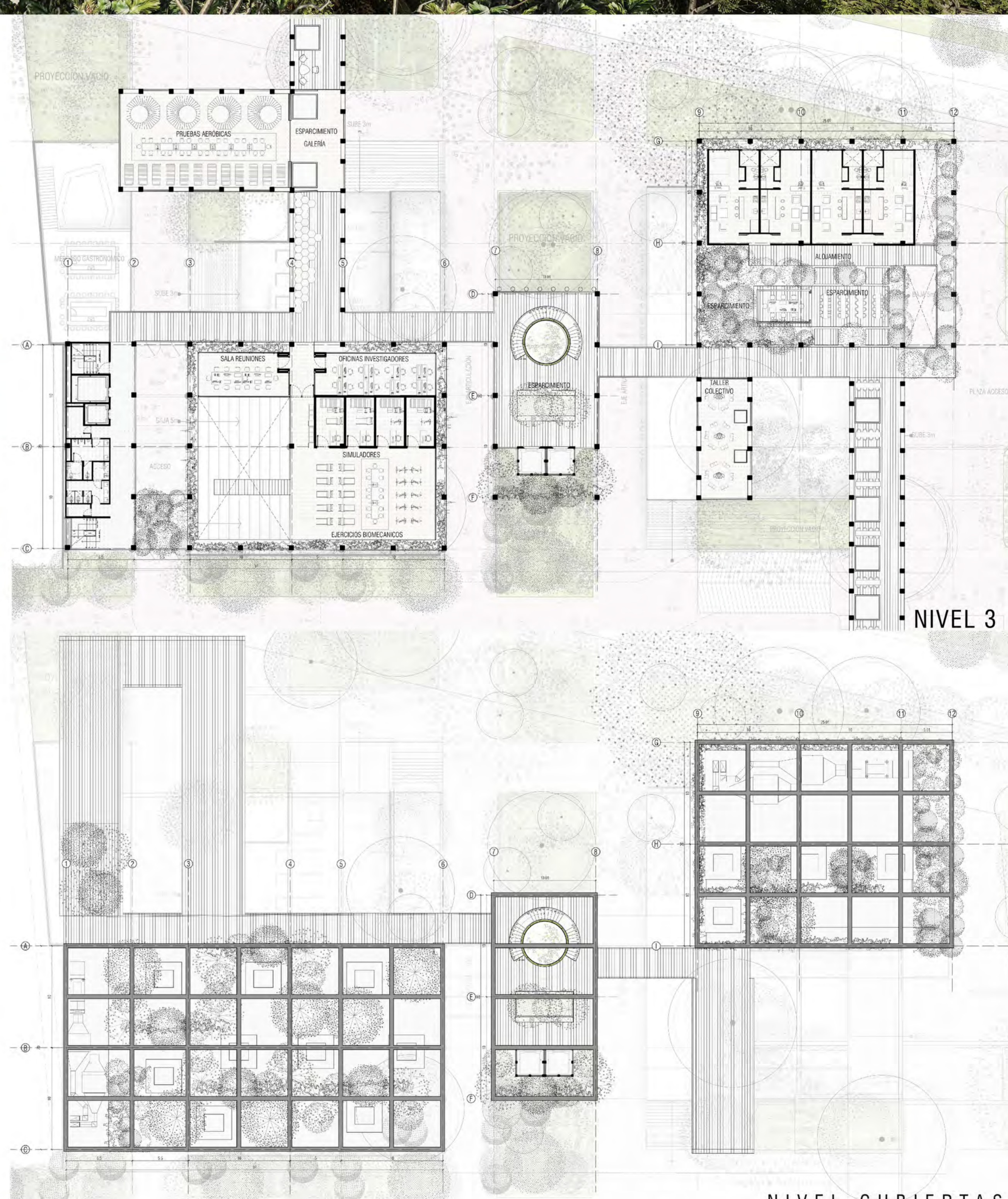
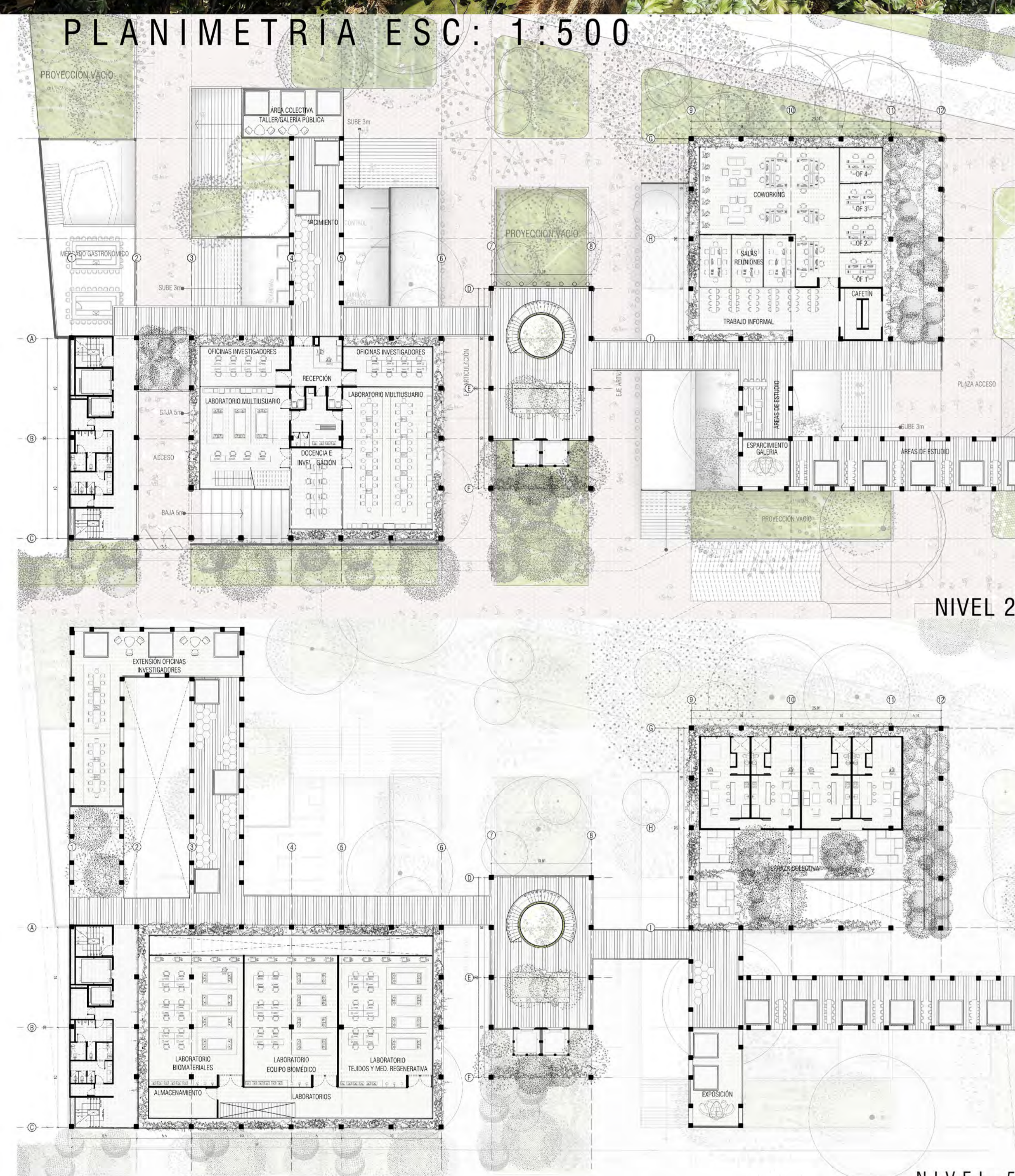
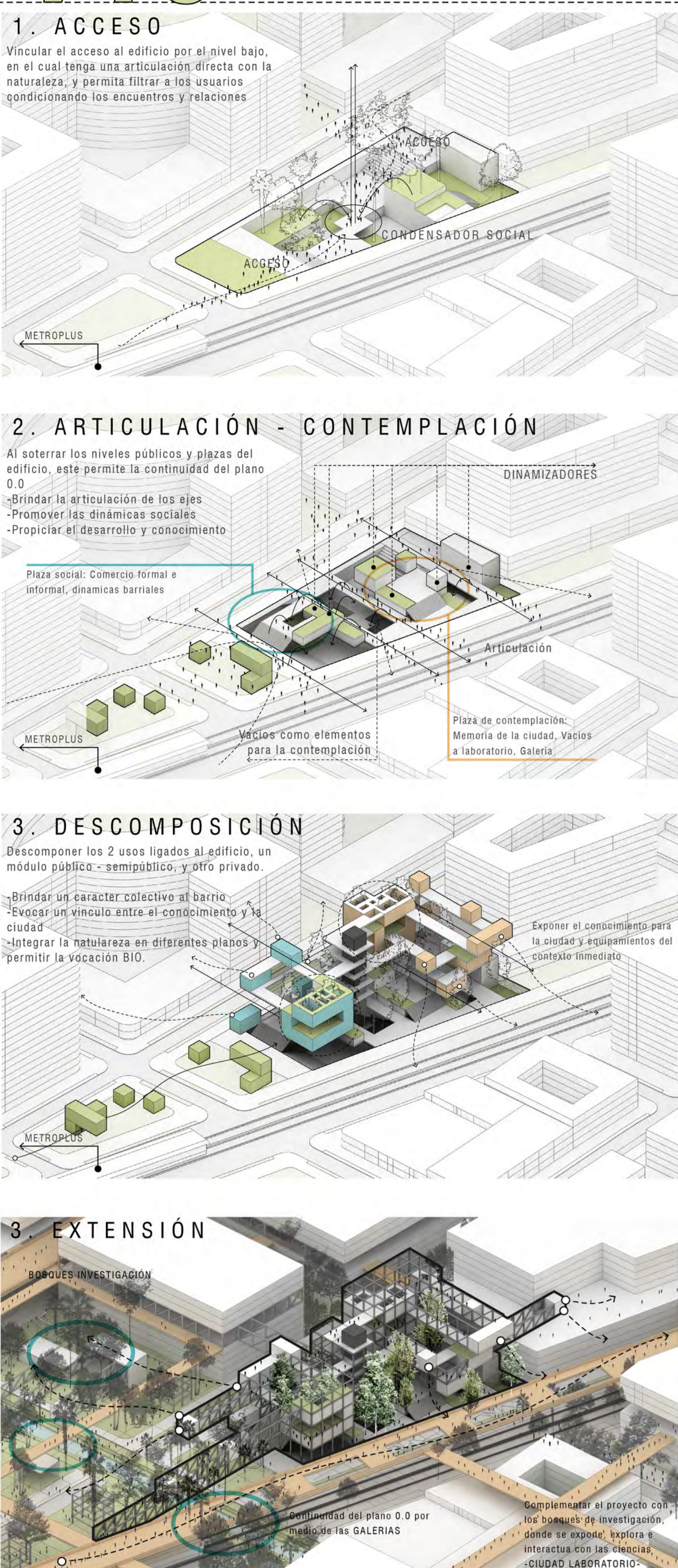


VOLUMEN LABORATORIOS / VOLUMEN PRIVADO



REFERENTES - EN LOS DIFERENTES ÁMBITOS





Cada torre cuenta con un sistema independiente de pórticos perimetrales en concreto reforzado(01), para los módulos que se expanden del edificio, se desarrollan puentes metálicos adosados a estructura a porticada, cercha tipo vierender(02) con un extremo fijo y otro móvil apoyado en una ménsula en concreto.